

## 标准配置

## Standard Accessories

- > 标准附属配件
  - > 混式离合刹车器
  - > 滑块及模具平衡装置
  - > 电动滑块调整装置(附油压锁定)
  - > 循环集中润滑给油装置
  - > 二度落保护装置
  - > 荷重检测(安全)装置
  - > PLC可程式控制器
  - > 电子式旋转开关(预备6连)
  - > 电子式曲轴角度指示器/行程数指示器
  - > 电子式行程计数器/预调计数器(各6位数)
  - > 机械式摸高指示器(0.1mm)
  - > 误送检知回路
  - > 独立式电器控制箱
  - > T型操作台
  - > 安全挡块及安全插销
  - > 空气源接头
- > Subsidiary accessories of the standard Huai
  - > Mixed clutch brake
  - > Slider and die balancing device
  - > Electric slide adjustment device (with oil pressure locking)
  - > circulating concentrated lubrication system
  - > two degree drop protection device
  - > Load detection (safety) device
  - > PLC programmable controller
  - > electronic rotary switch (preparation 6)
  - > Electronic crankshaft angle indicator / stroke indicator
  - > Electronic stroke counter / preset counter (6 digits)
  - > mechanical high indicator (0.1mm)
  - > Mistakenly send the detection loop
  - > Independent electrical control box
  - > T type operating table
  - > Safety block and safety plug
  - > Air source joint

## 选择配置

## Optional Accessories

- > 特殊附属配件
  - > 飞轮刹车装置
  - > 脚踏开关(附切结书)
  - > 滑块上部顶料装置
  - > 主马达逆转装置
  - > 变频器
  - > 光电安全装置加护盖
  - > 防震装置
  - > 基础螺丝及基础版
  - > 电源插座110V/220V单(电源客户自备)
  - > 模具照明灯
  - > 自动化周边装置
  - > 快速换模装置
- > Special accessory parts
  - > Flywheel brake device
  - > Foot switch (attached knot book)
  - > Top feeding device for upper slider
  - > master motor reversing device
  - > Frequency converter
  - > photoelectric safety device plus cover
  - > Shock proof device
  - > base screws and basic editions
  - > Power supply socket 110V/220V single phase (power client self provided)
  - > mold light
  - > Automation peripherals
  - > fast die changing device

Hotline: **400-100-5508**

**AOMATE**

宁波澳玛特高精冲压机床股份有限公司  
Ningbo Aomate High Precision Power Press Co.,ltd.

澳瑪特公司銷售部

AOMATE MARKETING DEPARTMENT

Tel: 86+574 86113500 / 86113501 / 86113502 / 86113518

Fax: 86+574 86113511

www.aomate.com.cn

E-mail:sale02@aomate.com.cn

地址：中國寧波經濟技術開發區北侖沿山河北路58-66號（富春江中路東首/海龍工業園）

Add: NO.58-66 North yanshanhe Road, (Beilun) Economy &Technology Development Zone, Ningbo, China

# 400-I200T

**AOMATE**



## PRODUCT FEATURES

- 机身刚性高、变形量小
  - 肘节式双曲焊机构，下死点停留时间长、精度高
  - 适用厚板精密下料及压印
  - 结构刚性最佳化
  - 冲压制品精度大幅提升
  - 模具寿命有效延长
  - 提升连续加工的限制条件
  - 提升精密制品加工的品质与稳定性
  - 连杆机构，扩大加工领域
  - 降低噪音与震动，提升工作环境品质
- The rigidity of the fuselage is high and the amount of deformation is small.
  - The elbow joint type hyperbolic welding mechanism has a long residence time and high accuracy.
  - Precision blanking and embossing for thick plate
  - Structural rigidity optimization
  - Drastically improving the precision of stamping products
  - Effective prolongation of die life
  - Restrictive conditions for improving continuous processing
  - Improving the quality and stability of precision products processing
  - Connecting rod mechanism, enlarging the field of machining
  - Reduce noise and vibration to improve the quality of working environment



## 「APT2」系列 闭式双点肘节式精密冲床

## APT2 Sery H-Frame Double Point Kuncle Precision Press



## 精密冲床

APT2 系列冲床可以进行钣金的冲压制程(下料、引申、弯曲及局部成型制程)及冷门锻造制程(压扁/锻粗制程、挤伸、引缩、压印成型制程)复合工法，达到板材的近净成型冲锻复合加工。

### Precision Press

APT2 series punching machine can carry out sheet metal stamping process (blanking, extension, bending and local molding process) and cold door forging process (flat / Forging rough process, extrusion, contraction, press molding process) composite method to achieve the near net forming of sheet metal stamping and forging compound processing.



## 规格参数

Specification parameter

機種		APT2-260	APT2-400	APT2-600	APT2-800	APT2-1000	APT2-1200
能力	Ton	260	400	600	800	1000	1200
能力发生点	mm	8	8	8	8	8	8
行程长	mm	120	160	200	200	250	250
行程数	定速	35	35	35	30	30	30
	变速	SPM 35~50	25~50	25~45	25~40	20~35	20~35
最大摸高	mm	450	450	600	650	650	650
滑动调整量	mm	50	80	100	120	120	150
滑块板面积	mm	1300x750	1600x900	2200x1250	2250x1300	2500x1400	2500x1400
台盘面积	mm	1300x750	1600x900	2200x1250	2250x1300	2500x1400	2500x1400
侧向开口	mm	400x400	800x600	1200x800	1300x800	1400x800	1400x800

## 高亲和力、多机能电气控制系统

High affinity and multifunction electrical control system

### 电气系统功能

- 控制元件均采各大厂牌产品，系统扩充性高 备品取得容易。
- 采开放式 PLC 控制架备，可提供操作便利与互换相容性高之控制系统

### 连续监视

- 冲床 动运转 (Motion Detector) 自动侦测，可侦测轴断裂、刹车来令片磨损过量顿号、Encoder (译码器) 异常、离合刹车动作异常等功能，以确保冲床之安全操作。

### 电子式角度控

- 采用 RFSOIVFR 位置感知器，可抗干扰、抗震动及无停电记忆失效之问题。
- 全自动刹车定补正，可避免因来令片磨损、刹车角度变更或行程速度 (SPM) 改变，定点停止不准确之缺失。

### ELECTRICAL SYSTEM FUNCTION

- The control components are all produced by the major brand products, and the system is easy to expand.
- The open PLC control rack can provide control system with convenient operation and high compatibility.

### CONTINUOUS MONITOR

- The automatic detection of the punching machine (Motion Detector) can detect the function of the shaft breaking and brake to make the plate wear overdose, the Encoder (decoder) abnormal, the clutch brake action abnormal and so on to ensure the safe operation of the punch.

### ELECTRONIC ANGLE CONTROL

- The RFSOIVFR position sensor can be used for anti interference, anti vibration and no power failure memory failure.
- Full automatic braking correction and correction can avoid inaccuracy of fixed-point stop due to the change of film wear, braking angle change or travel speed (SPM).

### 行程计数器

- 准行程计数功能包含，预设计数器、寿命计数器等。
- 批量计数器裁断计数器。(选用配备)

### 週边设备之配合

- 可提供各式之通讯界面，可做外部远端生产监控管理。(选用配备)
- 可提供机械手、送料机、伺服系统装置。(选用配备)
- 可提供冲床曲轴温度检测装置。(选用配备)
- 冲压吨位监视装置。(选用配备)

### STROKE COUNTER

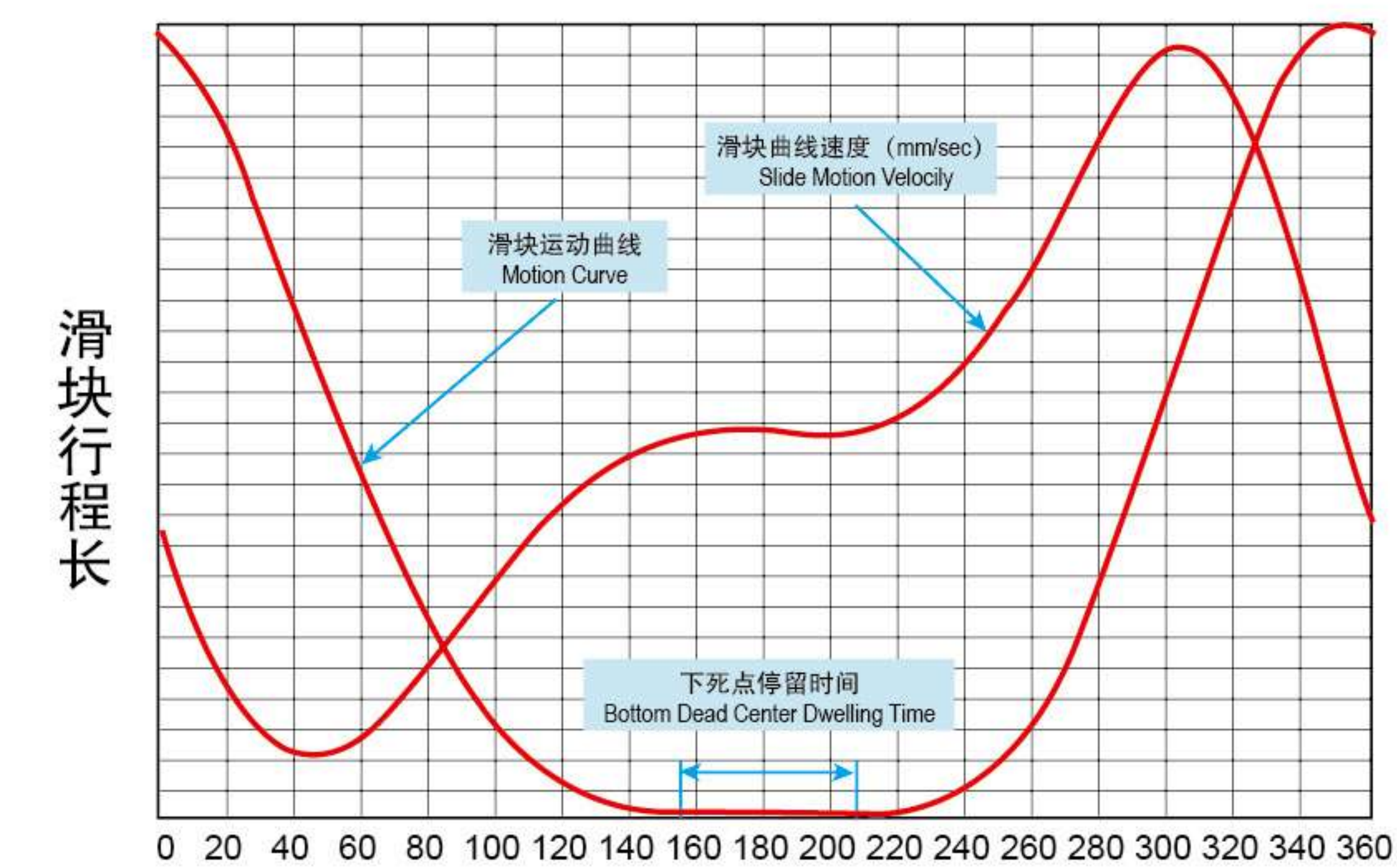
- The quasi stroke counting function includes preset counters, life counters and so on.
- Batch counter cutting counter.

### COORDINATION OF PERIPHERAL EQUIPMENT

- It can provide various kinds of communication interface, and can do external remote production monitoring and management. (choice of equipment)
- It can provide manipulator, feeder and servo device. (choice of equipment)
- It can provide a temperature detection device for the crankshaft of the punch. (choice of equipment)
- Punching tonnage monitoring device. (choice of equipment)

## 连动曲线

Continuous motion curve



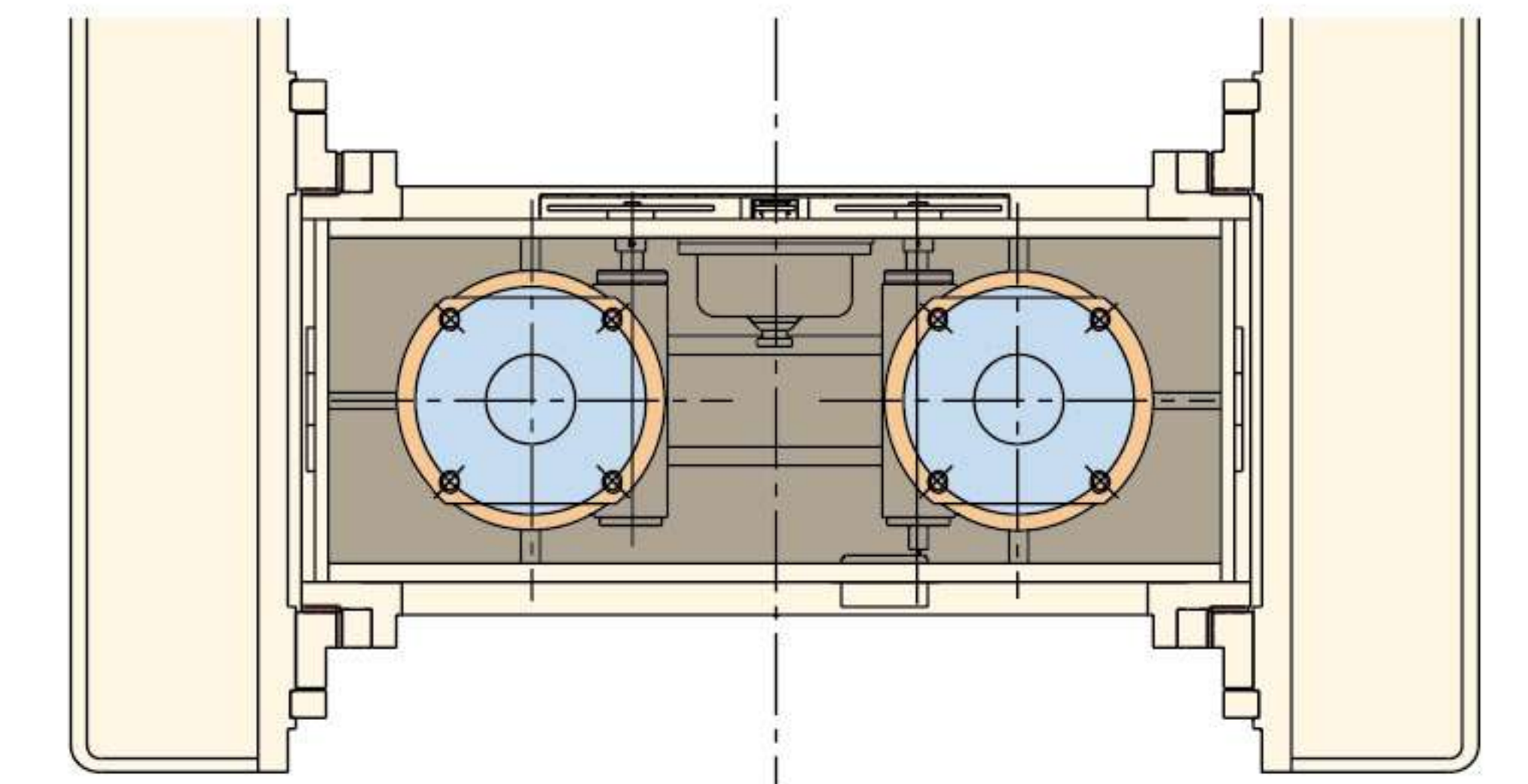
### 主齿轮角度 ( MAIN GEAR )

肘节式连杆机构，下死点停留时间长，利于延长塑性成型时间，减少材料在折弯加工时的回弹角加工域速度低，特别适用于製品伸引、压印、下料...等冲压工程。

The elbow joint linkage has a long stay in the lower dead point, which is conducive to prolonging the plastic forming time and reducing the speed of the springback angle in the bending process. It is especially suitable for the product extension, embossing and blanking. Such as stamping engineering.

## 高精度八面导路

High precision eight plane guide



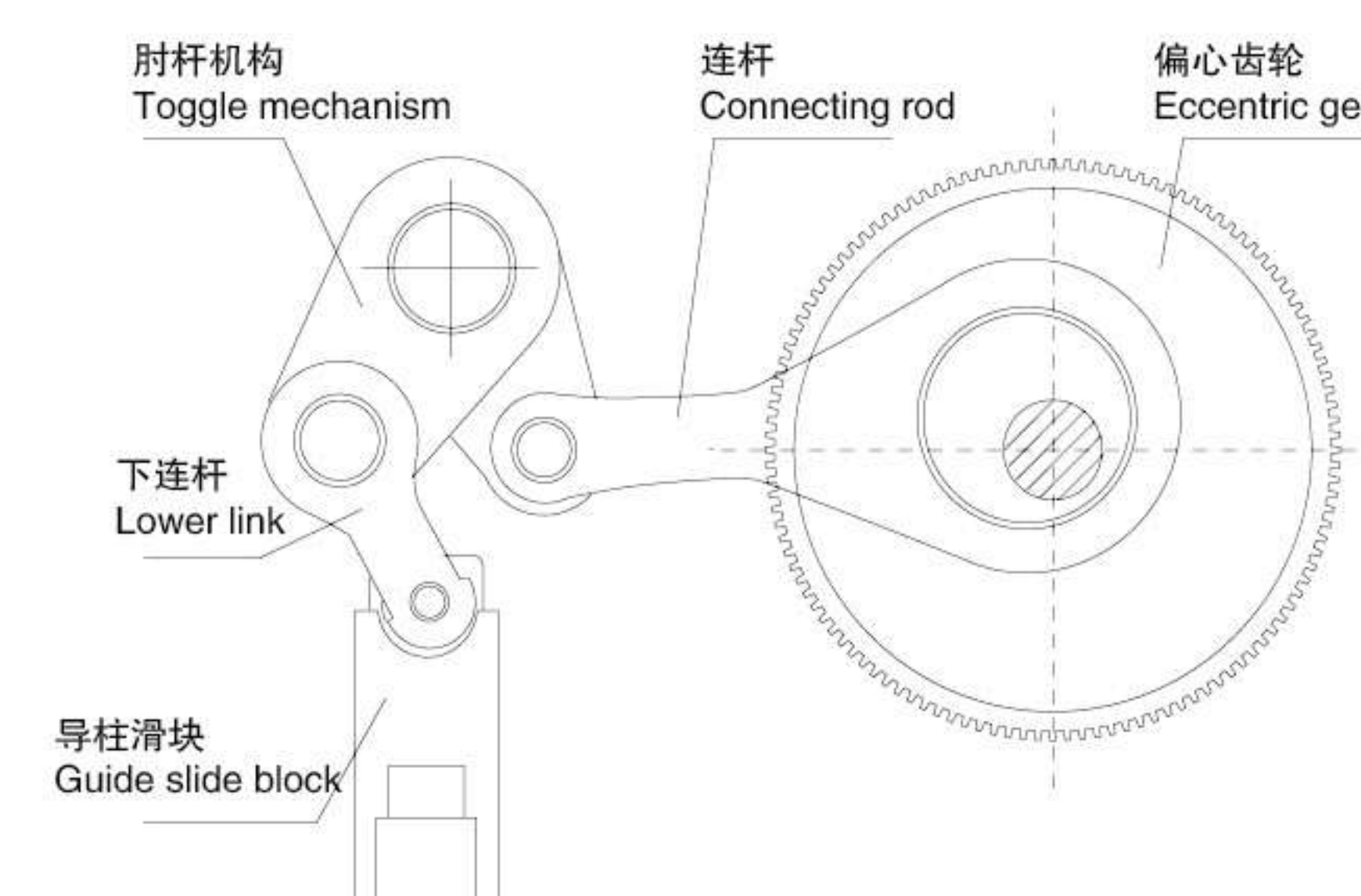
- 加长加厚的直角八面导路，可承受较高的偏心负荷。
- 超长导路精度高。
- 侧向力台身直接吸收，导路精度稳定性及佳
- 减低模具损坏率，延长模具寿命
- The lengthened and thickened right angle eight way guide road can withstand a higher eccentric load.
- The precision of the super long guide is high.
- The lateral force is directly absorbed by the body, and the accuracy and stability of the guide way are good.
- Reducing die damage rate and prolonging die life

## 肘杆传动机构

Continuous motion curve

滑块设置有平衡器，用于平衡滑块机上模重量。滑块通过下连杆与肘杆连接。偏心齿轮通过连杆与肘杆连接。偏心齿轮的旋转运动转变为肘杆的摆动，进而变成滑块的上下往复运动。

The slider is provided with a balancer for balancing the weight of the upper die of the slide machine. The slider is connected to the elbow bar through the lower connecting rod. The eccentric gear is connected to the elbow bar through the connecting rod. The rotation of the eccentric gear changes to the swing of the elbow bar, and then becomes the up and down reciprocating motion of the slider.

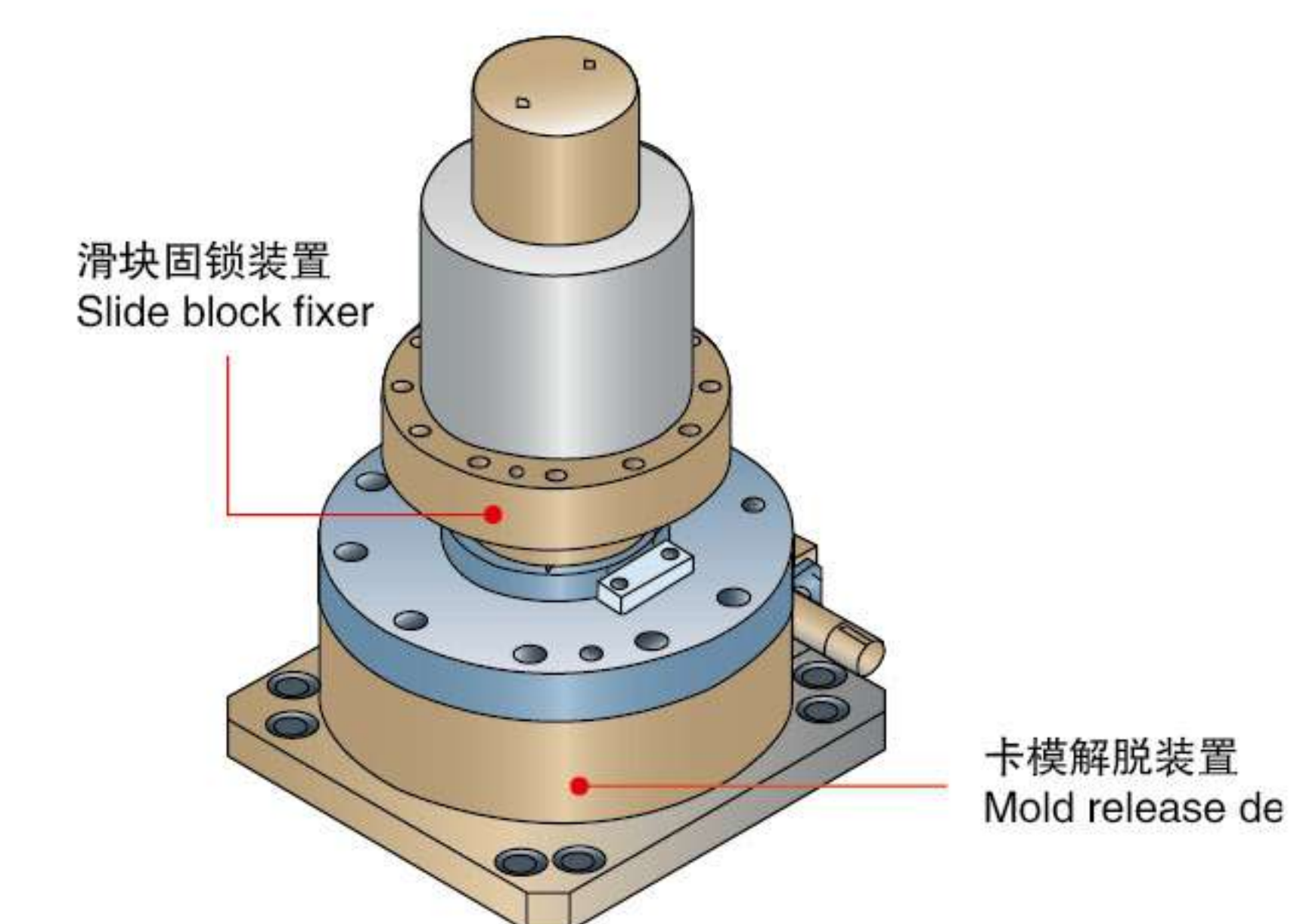


## 卡模解脱及滑块固销装置

Mold release and slide block fixing device

液压式之模解脱装置，于卡模时能迅速有效的排除，而提高冲床之稼动率。液压式滑块调整固销装置，于冲压作业时，能有高精度之下死点稳定性，使模具寿命与制作品精密之诉求得以实现

The hydraulic mold release device can remove the card quickly and effectively, and increase the rate of punching. The hydraulic slide adjustment and fixing pin device can achieve high accuracy and stability at the bottom dead point during stamping operation, so as to realize the demand of die life and precision of making works.



## 转动导柱设计

Design of rotating guide column

曲轴旋转及冲压加时，产生之侧向力可由导柱来承受，此可避免导路铜套之不均匀之磨损。遵柱与顶座形成一封开结构，使顶座有完整的结构强度，可降低齿轮噪音，避免压埃侵入。

The lateral force generated by crankshaft rotation and stamping can be borne by the guide column, which can avoid uneven wear of the guide copper bushing. A Fengkai structure is formed according to the column and the top seat, so that the top seat has a complete structural strength, which can reduce gear noise and avoid pressing intrusion.

